

### 17 **Diamonds and Pearls**

The Crown Jewels are only worn at Coronations and the annual State Opening of Parliament. At other formal occasions, such as banquets, the Queen wears the jewellery from her private collection. She owns more than 300 items of jewellery, including 98 brooches, 46 necklaces, 37 bracelets, 34 pairs of earrings, 15 rings, 14 watches and 5 pendants. Many of these are family treasures, worn by previous and current members of the Royal family.

This trio of arrangements, portrayed in the colours of the Union Jack, represents the Queen's favoured jewels of diamonds and pearls, which she often wears for everyday visits, private functions and state ceremonies.

### 18 **The Royal Family Tree**

This arrangement of the Royal Family Tree includes a sketch of Buckingham Palace along with the poem: 'They're Changing Guard at Buckingham Palace' by AA Milne. The Royal Family Tree begins with Queen Victoria. Space does not permit for the inclusion of all the extended family (it may have required an Oak Tree!), so the closest relations to the Queen have been chosen.

The Tree is placed in the Garden of Buckingham Palace, where the Summer Garden Parties are held. The knitted small hats held up by cocktail sticks represent the guests and a miniature table is set for tea with figures representing a soldier and one of the Queen's famous Corgis. The garden is surrounded with small plants and the two floral arrangements either side represent the State Crown.

### 19 **The Silver, Golden and Diamond Anniversaries**

The Silver Jubilee of Elizabeth II marked the 25th anniversary of her accession to the thrones of the United Kingdom and other Commonwealth countries. It was celebrated throughout 1977 culminating in June.

The Golden Jubilee saw international celebrations marking the 50th anniversary of the Accession of the Queen to the throne of seven countries. It was celebrated in 2002 despite the death of her sister Princess Margaret and mother, Queen Elizabeth the Queen Mother in February and March respectively.

The Diamond Jubilee was celebrated throughout 2012 to mark the 60th anniversary of the Queen's accession to the throne. Street parties, beacons and other celebrations were held for all three events.

### 20 **The Queen's visit to Stony Stratford**

The Queen visited Stony Stratford in 1966. She went to the Wolverton Urban District Council Offices which were in the Market Square. The building is now a private residence. The bouquet which was presented to the Queen was made by Gill Holland who was a florist in the town.

### 21 **The Sovereign's Orb**

The Sovereign's Orb is a hollow gold sphere about 16.5 centimetres in diameter and was made for Charles II in 1661. A band of gems and pearls runs along the equator with a half band on the top hemisphere. Atop the orb is a jewelled cross symbolising Christ's dominion over the world and the Sovereign's role as Defender of the Faith. It is handed to the Sovereign during the coronation ceremony and is borne later in the left hand when leaving Westminster Abbey.

### 22 **The Crown**

The Queen has a number of crowns depending upon the occasion. The Imperial State Crown is the Queen's most commonly used crown, being used for the State Opening of Parliament and it was used after the actual crowning at the coronation. At the Coronation she was crowned with the St. Edward's Crown.



THE QUEEN'S  
90TH BIRTHDAY  
CELEBRATION



**St Mary & St Giles Church**

**FLOWER FESTIVAL GUIDE**

**10<sup>th</sup> – 12<sup>th</sup> June 2016**

## WELCOME TO St MARY & St GILES

*It is 16 years since we last held a Flower Festival in the Parish Church. On that occasion the Church was observing the Year of Jubilee celebrated by all major Christian Churches throughout the world. The arrangements of that Flower Festival centred around events in the life of our Lord and Saviour, Jesus Christ.*

*This Flower Festival is held to mark the 90th Birthday of Her Majesty Queen Elizabeth II. As you walk around the Parish Church you will discover twenty-two floral arrangements depicting various themes from Her Majesty's life, as well as of a patriotic nature.*

*As we visit each of the twenty-two arrangements the setting reminds us that Her Majesty's Christian Faith plays a very important part not only in her life, but also in her understanding of the sacred nature of her role. The anointing in the Coronation Service is the most sacred part of the Rite - the moment when the Monarch is set apart for this particular ministry to the Realm.*

*Before leaving the Parish Church do visit the Blessed Sacrament Chapel in the south-east corner of the church and pray the following official prayer for Her Majesty the Queen in this her 90th Year:*

**Heavenly Father,  
who hast brought our gracious sovereign Queen Elizabeth  
to the completion of her ninetieth year,  
and dost gather her people in celebration of the same:  
grant that we, rejoicing before thee with thankful hearts,  
may ever be united in love and service to one another,  
and her kingdom flourish in prosperity and peace,  
through Jesus Christ our Lord.  
Amen.**

## WORSHIP IN OUR PARISH

Sundays: 9:30am at St Mary & St Giles  
11:00am at All Saints  
Tuesdays: 10:30am at All Saints  
Wednesdays: 7:30pm at St Mary & St Giles  
Thursdays: 10:30am at St Mary & St Giles  
Fridays: 8:00am at St Mary & St Giles School

[www.parishstonystratfordcalverton.com](http://www.parishstonystratfordcalverton.com)

### 12 **Lest We Forget**

Although the Queen holds a ceremonial title of Colonel-in-Chief, the Queen and her family are very much involved in the armed forces. Every year, on Remembrance Sunday the Royal family lay wreaths at the Cenotaph.

The red remembrance poppy has become a familiar emblem of Remembrance Day due to the poem "In Flanders Fields" written by Canadian physician Lieutenant-Colonel John McCrae. To commemorate 100 years since the start of WW1, an amazing array of clay poppies was displayed around the Tower of London, turning the ground into a sea of red. Two of these poppies form part of this display.

### 13 **Trooping the Colour**

Trooping the Colour is a spectacular and colourful military parade that marks the official birthday of the Queen. It is now also known as the Queen's Birthday Parade and takes place on the second or third Saturday in June. About 1400 soldiers, 200 horses and 400 musicians march from Buckingham Palace along The Mall to Horse Guards Parade and back again. Trooping the Colour is a tradition going back to the seventeenth century when the colours (regimental flag of the regiment) was trooped in front of soldiers to make sure everyone could recognise their flag in battle. In 1805 the tradition started to hold this ceremony as a birthday parade for the Sovereign George III

In this floral arrangement we have depicted the red tunics and black bearskin hats worn by the Footguards of the Queen's Household Division, who take part in the Queen's Birthday Parade, in our choice of flowers and foliage.

### 14 **Maundy Thursday**

Maundy Thursday is the Christian holy day falling on the Thursday before Easter. It commemorates the Mandatum (*commandment to serve*) and Last Supper of Jesus Christ with the Apostles. The Queen follows a traditional role of giving money to a group of pensioners. Mary Saggars and Charlie Sherwood received the 'Maundy Money' from the Queen at Christ Church Oxford in March 2013. A photograph of the money is on view and also The Young Christians have made posies similar to ones that would be given to the Queen.

### 15 **Fire**

On boxing Day 1964 fire destroyed the organ and seriously damaged the interior of the church. A plaque on the pulpit together with its scorched wood finials is a reminder of this tragedy. Who can forget that the Queen described the year 1992 as 'annus horribilis' after witnessing her beloved Windsor Castle on fire.

### 16 **Royal Ascot**

This Meeting, which takes place in the middle of June each year, is considered to be the height of the social calendar, and is attended by Her Majesty the Queen and other members of the Royal Family. Ascot is very close to Windsor Castle and the Queen normally arrives in a horse-drawn coach, making her entrance past the grandstand to the Royal Enclosure. The racecourse was founded in 1711 by Queen Anne and remains the property of the Crown. A right-handed turf track, which includes a steeplechase course, Ascot stages 25 race days each year of which the most famous and prestigious is the June Royal Ascot Meeting replete with the pageantry of the Royal Procession, while Ladies' Day is an international event of fashion and style.

The Queen's love of horses and racing has been serious throughout her adult life. Her record of prize winning puts her among the leading owners in this country. Among one of the most famous race horses she has owned is Estimate, who won at Royal Ascot taking the 2013 Gold Cup - the first time in the then 207 year history of the race that it had been won by a reigning Monarch.

### **5 The Arrangements on the Church 'Slender-Fluted' Columns**

The columns are decorated in the colours of the Union Jack, the national flag of the United Kingdom. The design is the cross of St Andrew, counter-charged with the cross of St Patrick over all the cross of St. George. The flag also has an official or semi-official status in some other Commonwealth realms.

### **6 The Queen's Handbags**

The Queen is rarely seen in public without a handbag. Indeed, one of her handbags even made an appearance in the official portrait to mark her 90th birthday, with Mia Tindall, her great-granddaughter given the privilege of holding it for the monarch.

### **7 God save the Queen (The National Anthem)**

God Save the Queen is the national anthem of the United Kingdom, one of two for New Zealand and several UK territories which also have local anthems and the Royal anthem for Australia, Canada, Barbados and Tuvalu. The words are adapted to the gender of the current monarch. The author of the tune is unknown and it is thought to originate from plainchant, though some attribute it to John Bull, 1619. The Queen and her consort Prince Phillip are saluted with the entire anthem, while other members of the royal family receive the first 6 bars. St Mary and St Giles Church band will play the National Anthem during their concert with cream teas beginning at 2:30pm on Sunday 12th June and will also play 'Happy Birthday' to wish her majesty Queen Elizabeth II a Happy 90th Birthday.

### **8 Country Pursuits**

The Queen's love of the countryside and traditions is depicted in this arrangement. Her love of Balmoral and Sandringham have been significant throughout her life time. Her Majesty has a life long passion for horses which began when she had her first pony at the age of four. She can still be seen out riding at her country residences or Windsor Castle.

### **9 The Commonwealth**

Queen Elizabeth II is the reigning constitutional monarch of 16 sovereign states which make up the Commonwealth of Nations. As of 2010, these 16 realms had a combined area of 18.7 million squared kilometres and a population of 143 million, of which all but about 2 million live in the 6 most populous: The United Kingdom, Canada, Australia, Papua New Guinea, New Zealand and Jamaica. The other realms are:- Antigua and Barbuda, The Bahamas, Barbados, Belize, Grenada, Saint Kitts and Nevis, Saint Lucia, Saint Vincent and the Grenadines, Solomon Islands and Tuvalu. Queen Elizabeth II holds the highest position in each Commonwealth realm, residing predominantly in this her oldest realm.

### **10 The Lady Chapel**

Lady Chapels are a feature in many a Parish Church and Cathedral. They are usually areas of the church set aside for weekday celebrations of the Liturgy and for private prayer. With the arrangement of red, white and blue flowers perhaps this might be an opportune moment to spend some time offering a prayer for our Queen and Country; and perhaps to light a candle; say a prayer for those who we are concerned for, and like the Queen offer ourselves to the King of Kings' service.

### **11 The Coronation**

On the 2nd June 1953, the coronation of Queen Elizabeth II took place at Westminster Abbey. The Queen ascended the throne at the age of 25, upon the death of her father King George VI. The coronation took place more than a year after his death because of the tradition that holding such a festival is inappropriate during the period of mourning. The Queen took the Coronation Oath to serve her people and to maintain the laws of God. Celebrations took place all over the Commonwealth and it was the first coronation to be televised in the United Kingdom.

## **Facilities during the Flower Festival:**

Lavatories: are situated through the arched doorway in the north-west corner of the Parish Church.

Disabled access: is via the Parish Hall - the entrances to which are along the path on the north side of the churchyard, and marked with green arrows on the plan on pages 5 & 6.

Refreshments: throughout the opening hours of the Festival are available in the Parish Hall adjoining the Parish Church.

## **THE FLORAL ARRANGEMENTS**

Numbers correspond to those on the plan on pages 4 & 5.

### **1 Flowers welcoming you to St Mary and St Giles Church**

We would like to welcome you to the Flower Festival at St Mary and St Giles Church. As you pass through the archway of flowers and enter the church we hope you will enjoy our celebration of the Queen's 90th birthday.

### **2 Red, White and Blue Floristry by SMSG School**

For the 'Celebration of Her Majesty, Queen Elizabeth II's 90th Birthday' our display is based on the colours of the Union Jack.

Paper, card, garden canes and glitter were used to create this colourful array of flowers. For one week, during lunchtimes, children and staff at SMSG transformed the Art Room into an indoor greenhouse. They were given some initial ideas but quickly added their own personal touches to the red, white and blue designs. Children from all year groups have taken part and more of their creations can be seen whilst enjoying tea and cake in the Parish Hall.

### **3 The United Kingdom**

The United Kingdom of Great Britain and Northern Ireland unites England, Northern Ireland, Scotland and Wales. The flowers in the arrangement are red roses for England, leeks for Wales, thistles for Scotland and Shamrock chrysanthemum for Northern Ireland. The Royal Standard of the United Kingdom is the flag used by the Queen in her capacity as Sovereign of the United Kingdom and its overseas territories. The standard is varied for use in Scotland. The Prince of Wales feathers are also included in the arrangement.

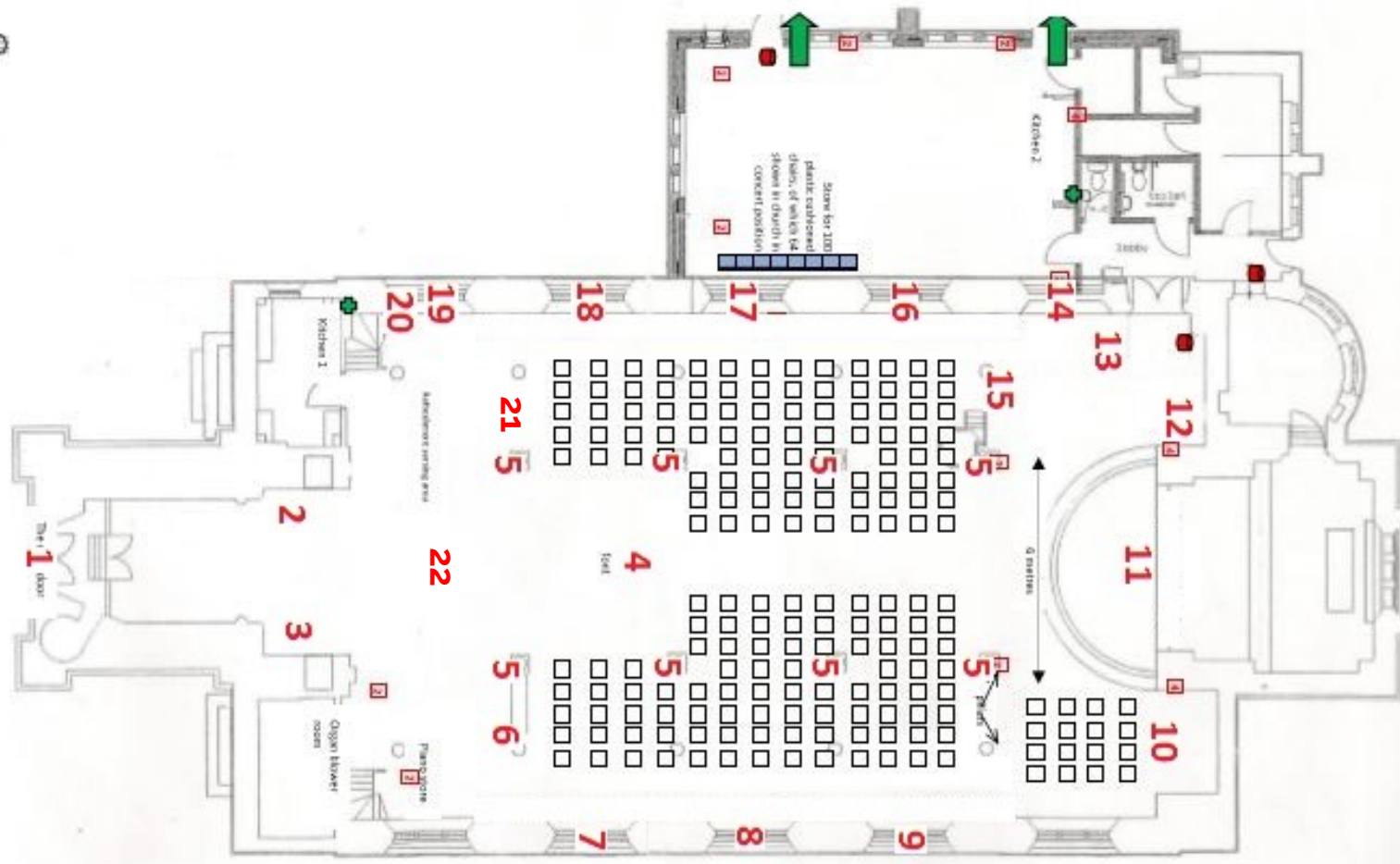
### **4 Early Years**

HRH Princess Elizabeth was delivered by Caesarean section on 21st April 1926 at 17 Bruton Street, the London home of her maternal grandfather. Her father, Prince Albert Duke of York (later King George VI) was the second son of King George V and her mother, Elizabeth Duchess of York was the youngest daughter of Scottish aristocrat Claude Bowes-Lyon 14th Earl of Strathmore and Kinghorne.

The baby princess was christened by the Archbishop of York, Cosmo Gordon Lang, in the private chapel of Buckingham Palace on 29th May 1926 and named Elizabeth Alexandra Mary. Her godparents were King George V and Queen Mary; Lord Strathmore; Prince Arthur, Duke of Connaught (her paternal great-granduncle); Princess Mary, Viscountess Lascelles (her paternal aunt); and Lady Elphinstone (her maternal aunt).

Her christening gown dates back to 1841 when it was made for Queen Victoria's eldest daughter Victoria, The Princess Royal. It was made of Honiton lace and Spitalfields silk.

## Floral Arrangements' Plan



↑ HIGH STREET ↓

1. Flowers welcoming you to St Mary & St Giles Church
2. Red, White and Blue Floristry by SMSG School
3. United Kingdom
4. Early Years
5. Pillars
6. Queen's Handbags
7. God Save the Queen
8. Country Pursuits
9. Commonwealth
10. Arrangements in the Lady Chapel
11. The Coronation
12. Lest We Forget
13. Trooping the Colour
14. Maundy Thursday
15. Fire
16. Royal Ascot
17. Diamonds and Pearls
18. Family Tree
19. Silver, Golden and Diamond Anniversaries
20. Queen's visit to Stony Stratford
21. The Sovereign's Orb
22. The Queen's Crown

### THANKS AND ACKNOWLEDGEMENTS

St Mary and St Giles Church would like to thank all those who have contributed to the Flower Festival. Our particular thanks to all volunteers, flower arrangers, musicians, stewards and helpers who have given their time, expertise and assistance. Without their dedication, help and support this event would not be possible.

We would like to express our gratitude to all the many individual sponsors and to the local businesses. Carmelo Hairdressers, Hawkins Family Law, Odells, The Crown, R & K Stockcraft and Willis Flowers. Thank you to everyone who made donations in memory of their loved ones.

### THANK YOU TO THE FLOWER ARRANGERS

Sheila Brazell, Jan Brown, Linda Burrows, Alicia Butler, Martin Capel, Children of SMSG School, Lesley Corcoran, Jill Eales, Carol Fuller, Katherine Gibbard, Janice Houghton, Rose Lake, Sue Owens, Judy Parker, Pat Partridge, Margery Shaw, Sue Starr, Hazel Wallis, Christine Waters, Young Christians

*The Bunting around the edges of the gallery was made by Sister Janet Northing CA*

*The painting in the 'Country Pursuits' arrangement is by Rita Oakley*